

**Record of Map Amendments  
South Interlake Planning District By-laws  
Amending the South Interlake Planning District Development Plan  
(Adopting B/L No. 3/10)  
Map 6 – Town of Stonewall – Land Use Classification**

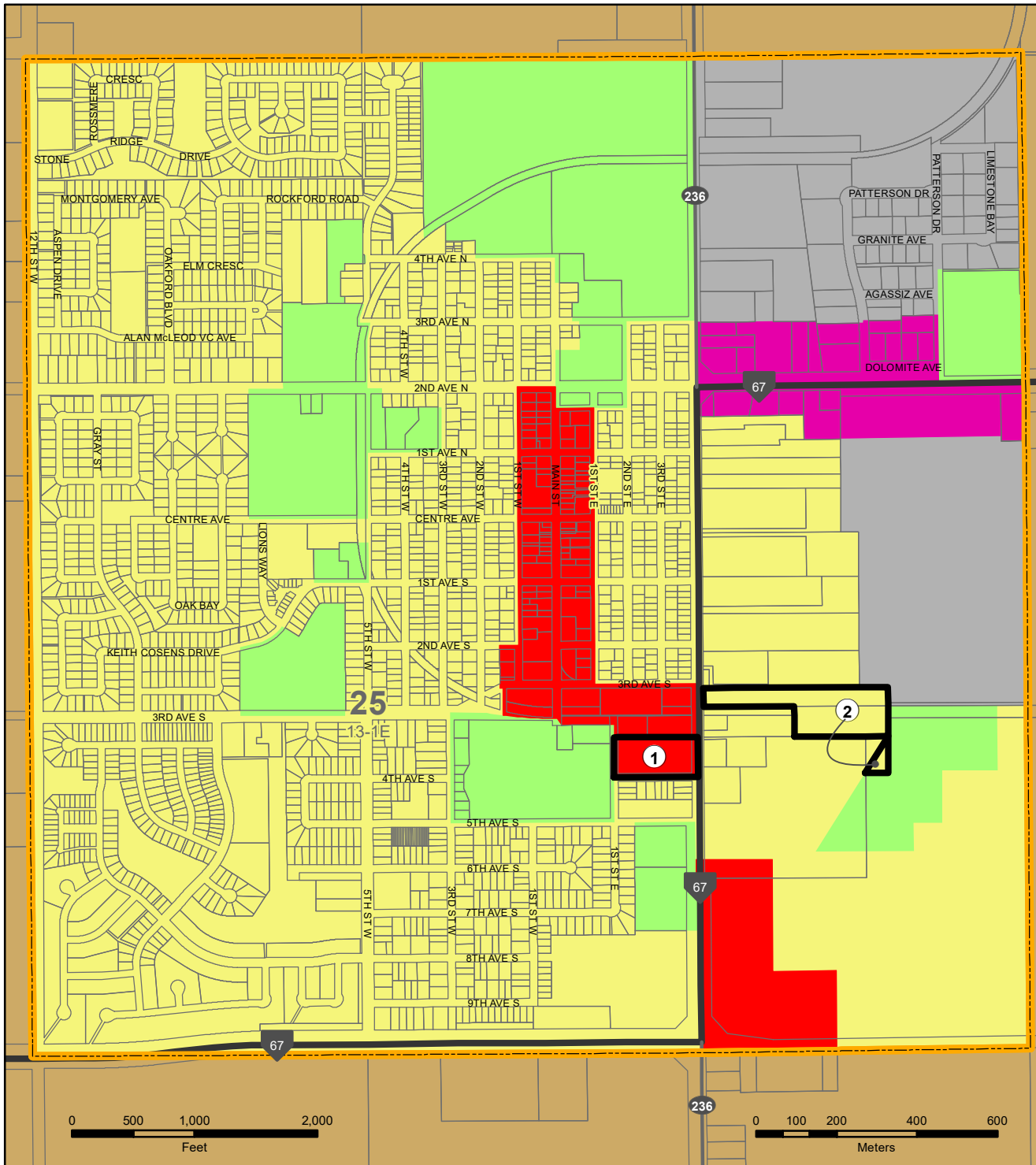
**Page: 1**

<b>MAP REF. #</b>	<b>BY-LAW NO.</b>	<b>COMMENTS</b>
(1)	1/14	Redesignated from "Residential Area" to "Commercial Area"
(2)	1/22	Redesignated from "Industrial Area" and "Parks, Institution and Open Space Area" to Residential Area"
(3)		
(4)		
(5)		
(6)		
(7)		
(8)		
(9)		
(10)		
(11)		
(12)		
(13)		
(14)		
(15)		
(16)		
(17)		
(18)		
(19)		
(20)		
(21)		
(22)		
(23)		
(24)		
(25)		
(26)		
(27)		
(28)		
(29)		
(30)		
(31)		
(32)		
(33)		
(34)		
(35)		
(36)		
(37)		
(38)		
(39)		

July 4, 2022

# SOUTHERN INTERLAKE PLANNING DISTRICT DEVELOPMENT PLAN

## MAP 6 TOWN OF STONEWALL LAND USE CLASSIFICATION



### Legend

- Commercial Area
- Highway Commercial Area
- Industrial Area
- Parks, Institution, and Open Space Area
- Residential Area
- Restricted Agricultural Area

- Town of Stonewall
- Provincial Trunk Highway
- Provincial Road

**OFFICE CONSOLIDATION**  
UP TO AND INCLUDING  
BY-LAW No. 1/22  
July 4, 2022

