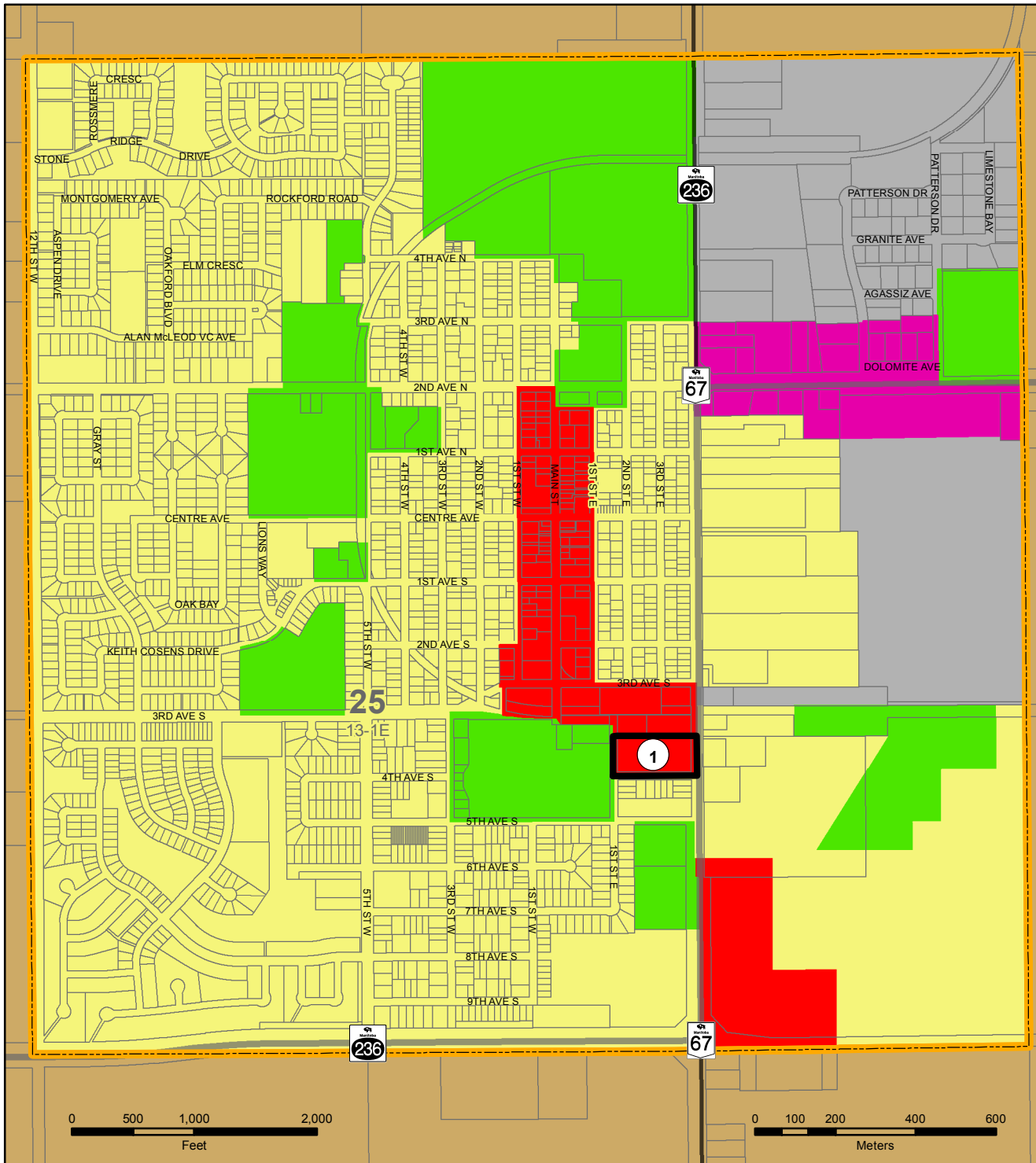


**Record of Map Amendments
 South Interlake Planning District By-laws
 Amending the South Interlake Planning District Development Plan
 (Adopting B/L No. 3/10)
 Map 6 – Town of Stonewall – Land Use Classification**

MAP REF. #	BY-LAW NO.	COMMENTS
(1)	1/14	Redesignated from "Residential Area" to "Commercial Area"
(2)		
(3)		
(4)		
(5)		
(6)		
(7)		
(8)		
(9)		
(10)		
(11)		
(12)		
(13)		
(14)		
(15)		
(16)		
(17)		
(18)		
(19)		
(20)		
(21)		
(22)		
(23)		
(24)		
(25)		
(26)		
(27)		
(28)		
(29)		
(30)		
(31)		
(32)		
(33)		
(34)		
(35)		
(36)		
(37)		
(38)		
(39)		
(40)		

SOUTHERN INTERLAKE PLANNING DISTRICT DEVELOPMENT PLAN

MAP 6 TOWN OF STONEWALL LAND USE CLASSIFICATION



Legend

- Commercial Area
- Highway Commercial Area
- Industrial Area
- Parks, Institutions and Open Space Area
- Residential Area
- Restricted Agricultural Area

- Town of Stonewall
- Provincial Trunk Highway
- Provincial Road

OFFICE CONSOLIDATION
UP TO AND INCLUDING
BY-LAW No. 1/14
April 20, 2016